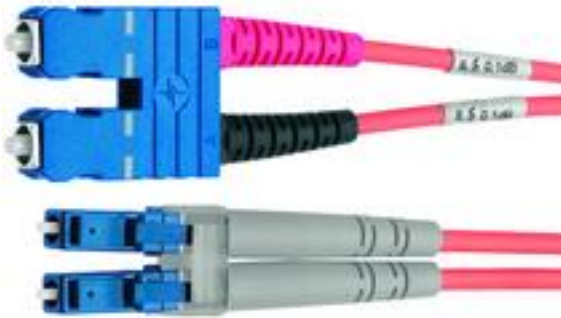


order number: L00893C0022

FO duplex adaptor cord 1st end LC Duplex, 2nd end SC Duplex G50/125 OM3  
5,0 m



Technical Attributes	
Fiber type	G50/125 OM3
Connector type	1st end SC Duplex, 2nd end LC Duplex
Length	5,0 m
Housing Colour	aqua
Cable Colour	aqua

### Product description

Acc. to ISO/IEC 11801 the fiber channels of duplex connectors are connected, i.e. channel termination A on the 1st side is connected to channel termination B on 2nd side. The channels A/B are marked by differently coloured cable boots (A=red, B=black).

Of all components in a channel, patch cords have to endure highest stress and wear. This is why many users rely on patch cords made by Telegärtner: Perfectly matched components, highest quality standards and completely tracked manufacturing processes make sure the data network works safely and reliably.

### Performance Characteristics

- Available for Singlemode and Multimode
- Standard lengths of 1 m, 2 m, 3 m, 5 m and 10 m
- Customer specific lengths available using the TICNET configurator at [www.telegaertner.com/ticnet](http://www.telegaertner.com/ticnet)

Mechanical Characteristics	
Cable structure acc. to DIN/VDE 0888	I-K(ZN)H 2x1 ...

Cable dimensions in mm: Zipcord	2,8 x 5,7
Cable dimensions in mm: Minizip	1,8 x 3,7
Max. pulling tension short-term/long-term in N: Zipcord	400 / 200
Max. pulling tension short-term/long-term in N: Minizip	240 / 140
Max. crush resistance long-term in N/m: Zipcord	5000
Max. crush resistance long-term in N/m: Minizip	2000
Min. bending radius in mm	25
Colour of outer jacket	aqua
Weight in kg/km: Zipcord	14,5
Weight in kg/km: Minizip	7,4

Climatic Characteristics	
Operating temperature in °C	-5 / +55
Storage temperature in °C	-30 / +70
Installation temperature in °C	-5 / +50
Flame retardancy	IEC 60332-1
Halogen-free acc. to	IEC 60754-2